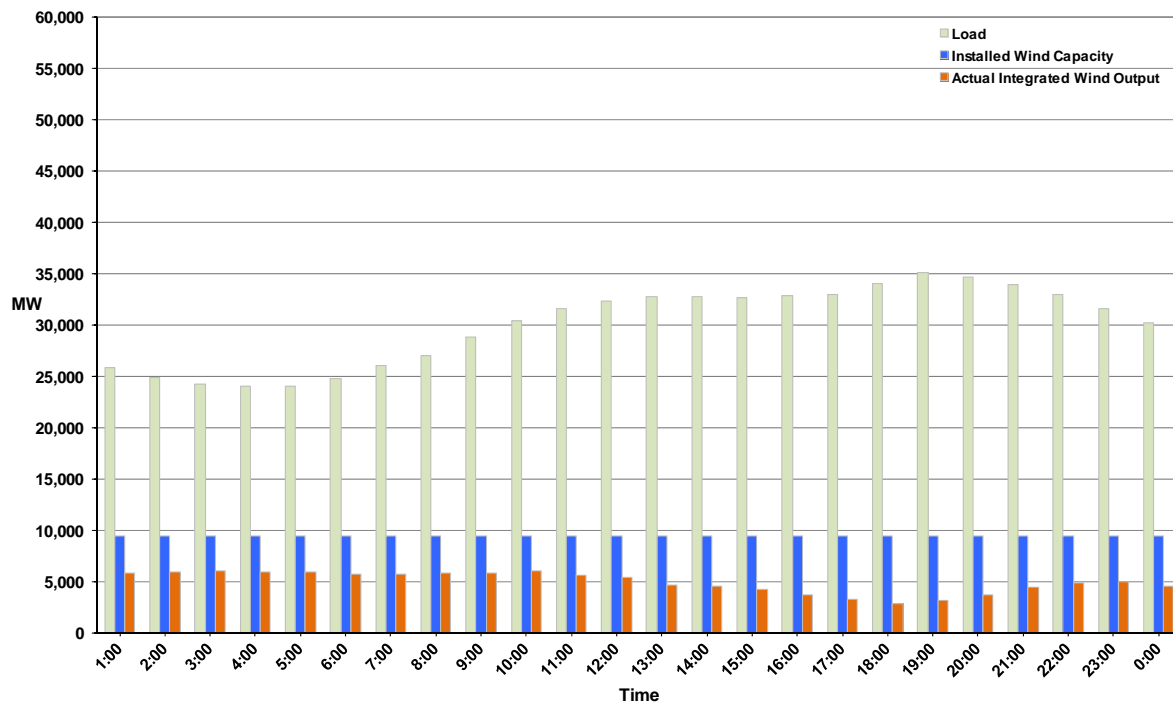




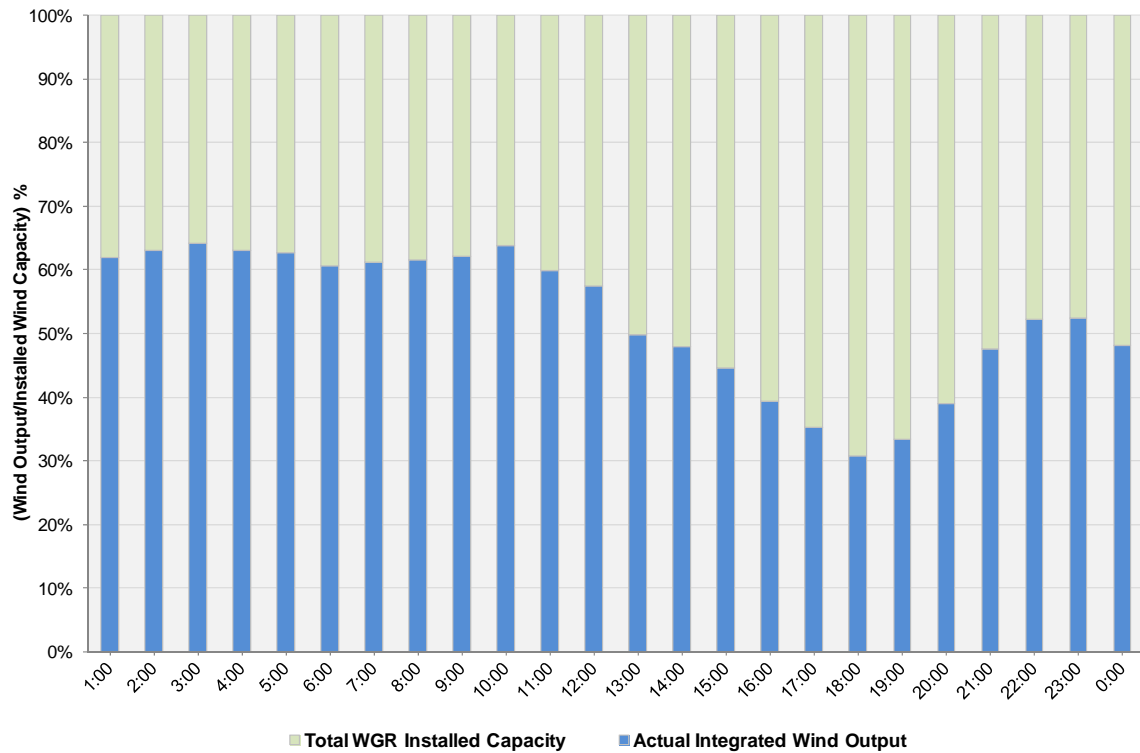
ERCOT Grid Operations Wind Integration Report: 11/19/11

Peak Load	35,165 MW
Load Peak Hour	19
Wind over Peak	3,142 MW
Wind Record 10/07/11	7,400 MW
Max Wind Value	6,216 MW
Wind Peak Time	09:22
Wind Integration %	20.52%

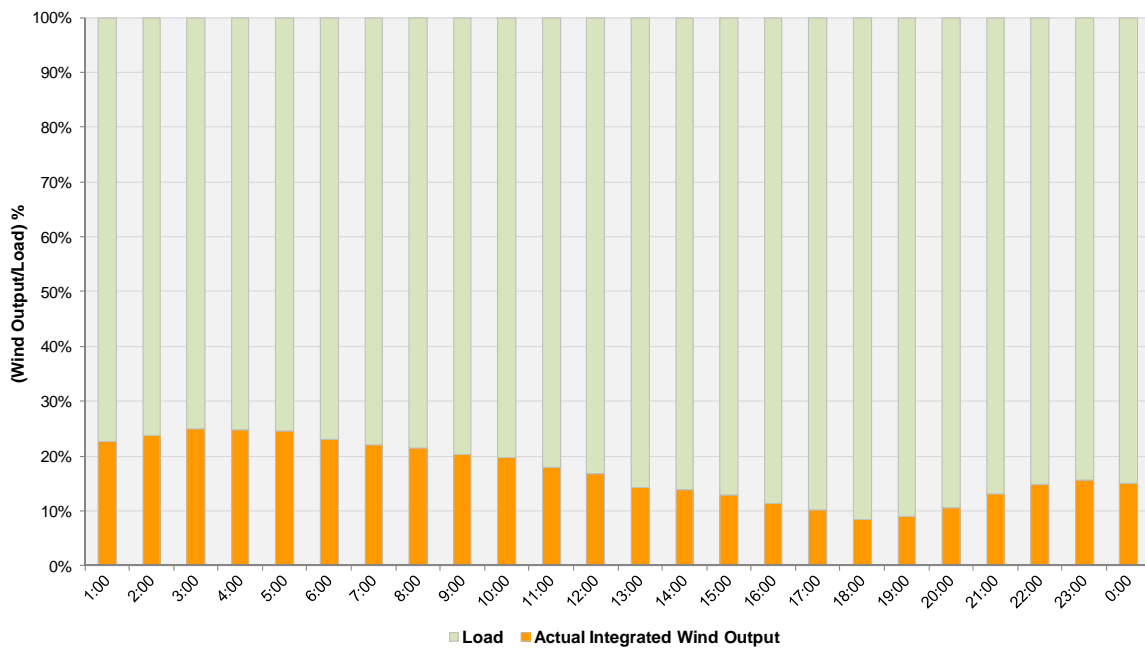
Hourly Average Actual Load vs. Actual Wind Output
11-19-2011



Actual Wind Output as a Percentage of the Total Installed Wind Capacity
11-19-2011



Actual Wind Output as a Percentage of the ERCOT Load
11-19-2011



ERCOT Load vs. Actual Wind Output 11/12/2011 - 11/19/2011

